



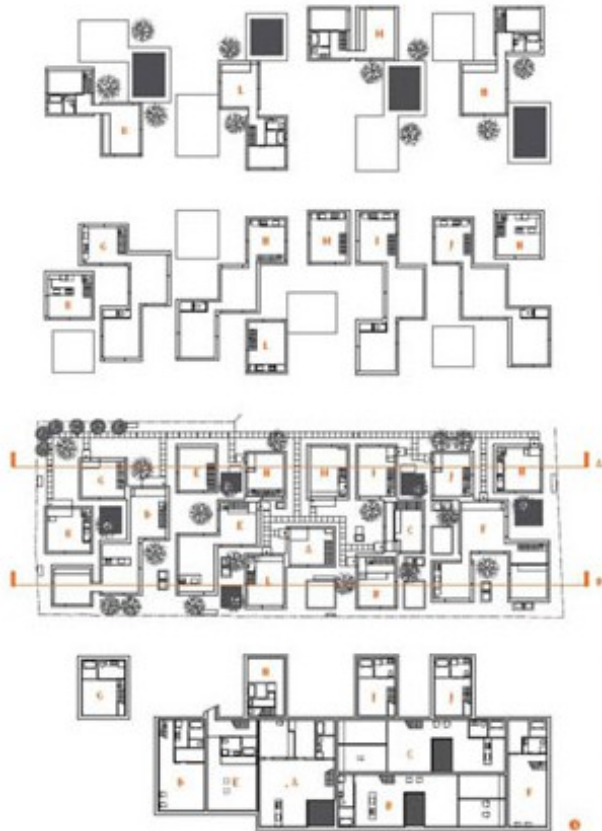


The model 'house a' SANAA, Tokyo, 2004



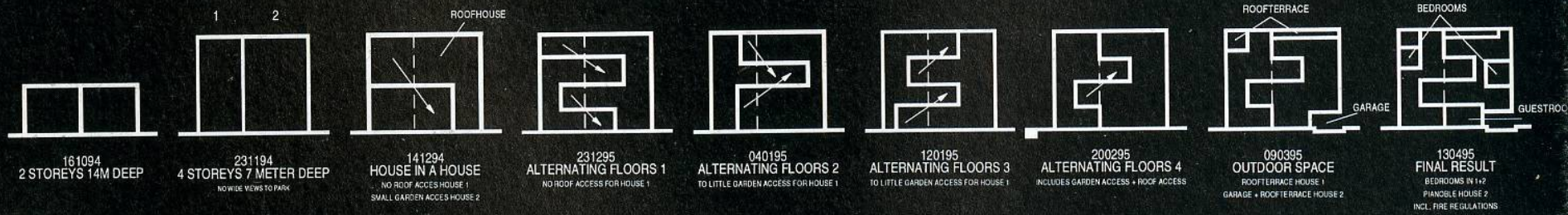


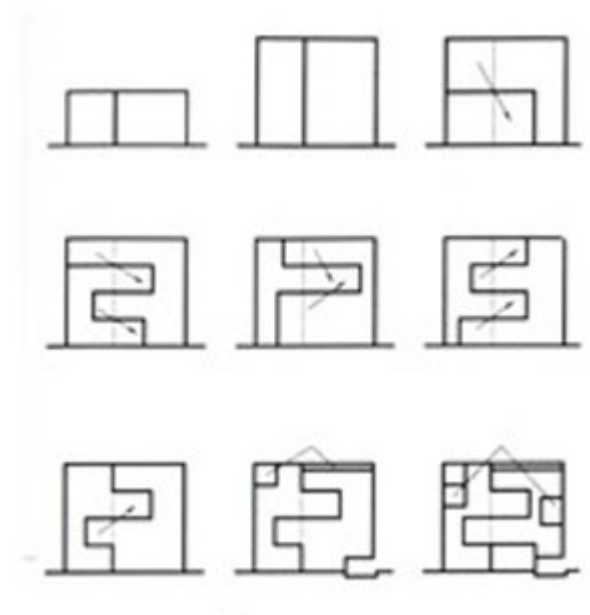
SANAA KAZUYO SEJIMA + RYUE NISHIZAWA |
SEIJO TOWN HOUSES



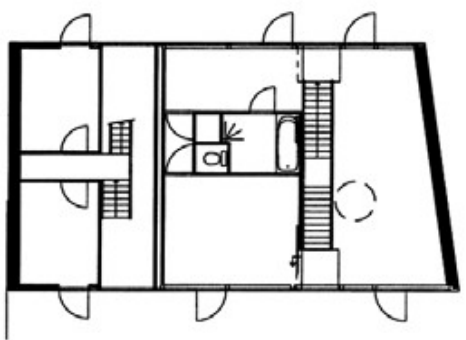
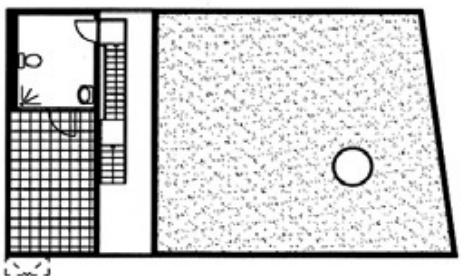
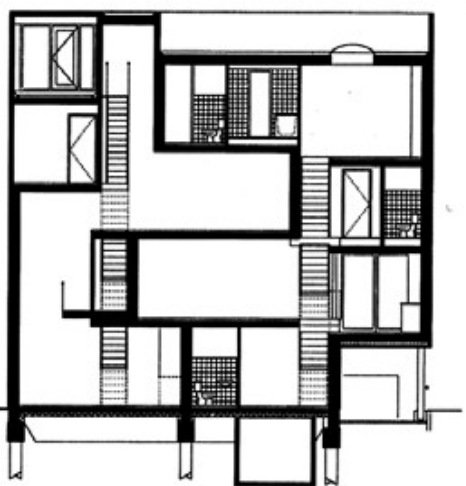
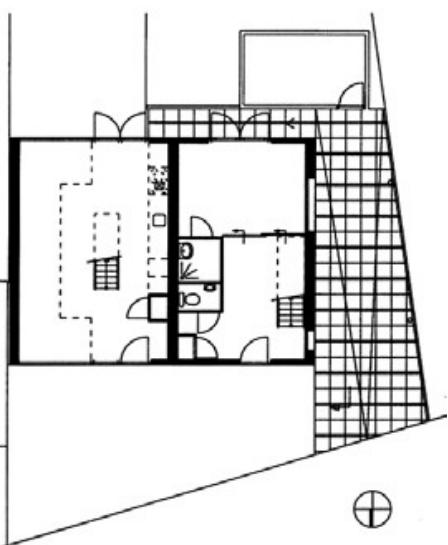
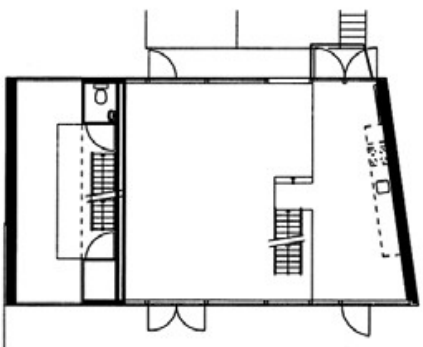
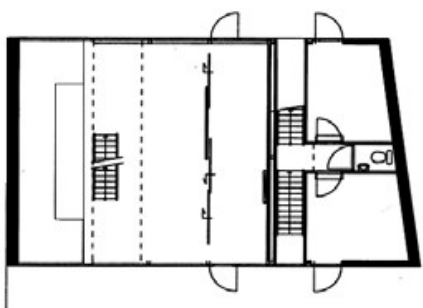


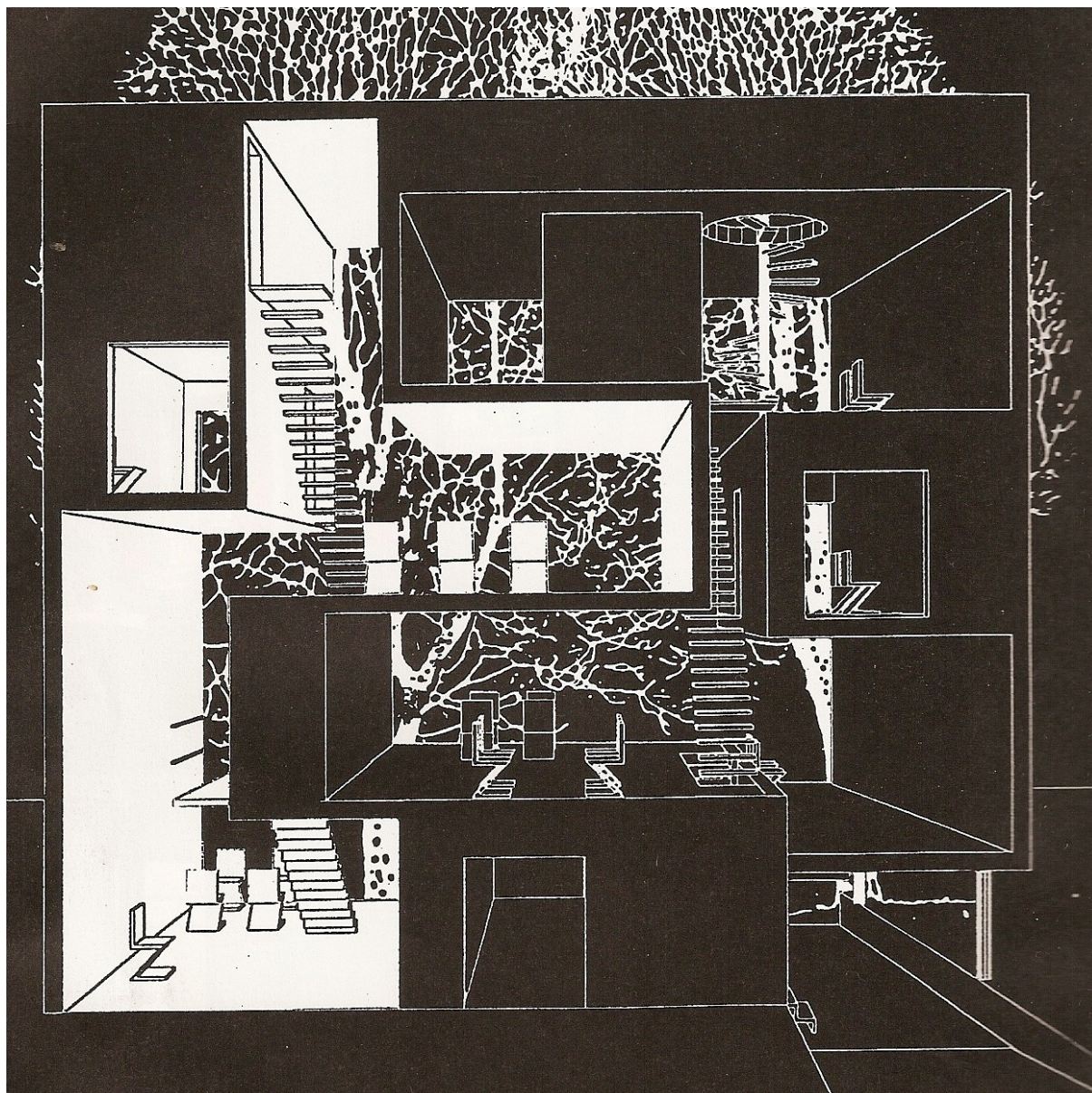






MVRDV & Mastenbroek
 Villa KBWW
 Utrecht / NL
 1995-1997























Hunsett Mill / ACME





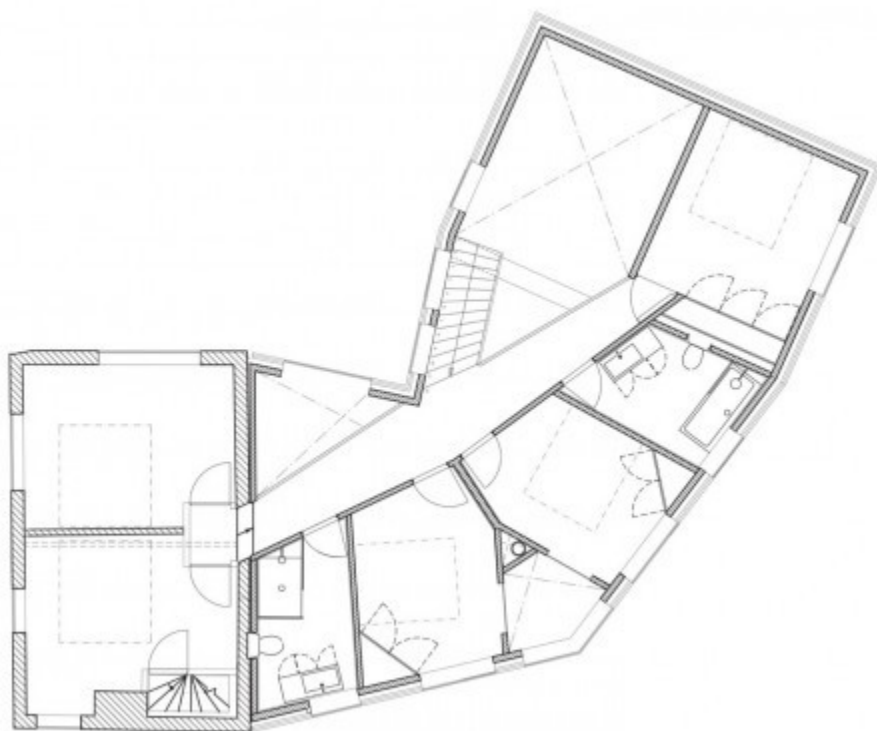
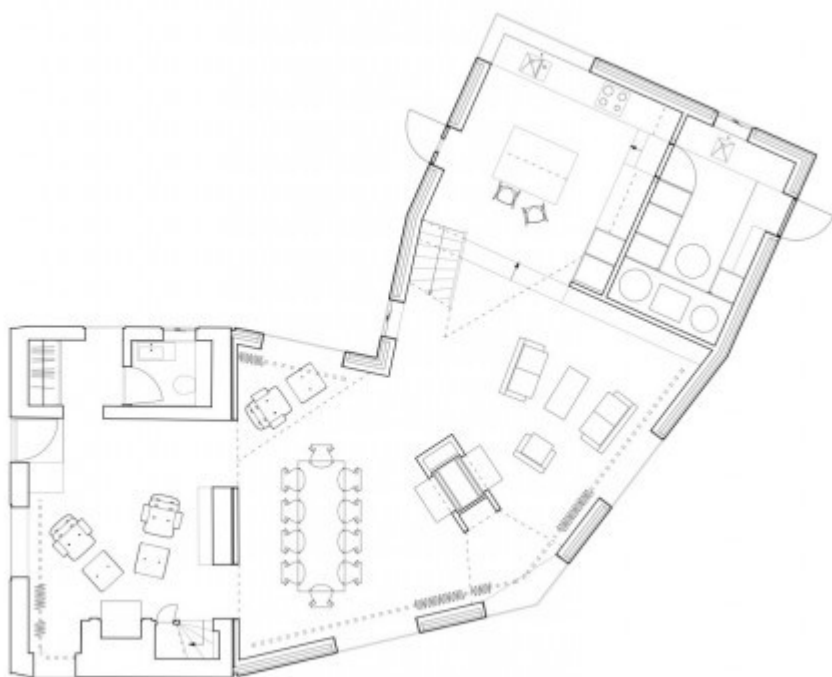
Hunsett Mill / ACME

studio Acme has been awarded the RIBA Manser Medal 2010 for the best new house in the UK.

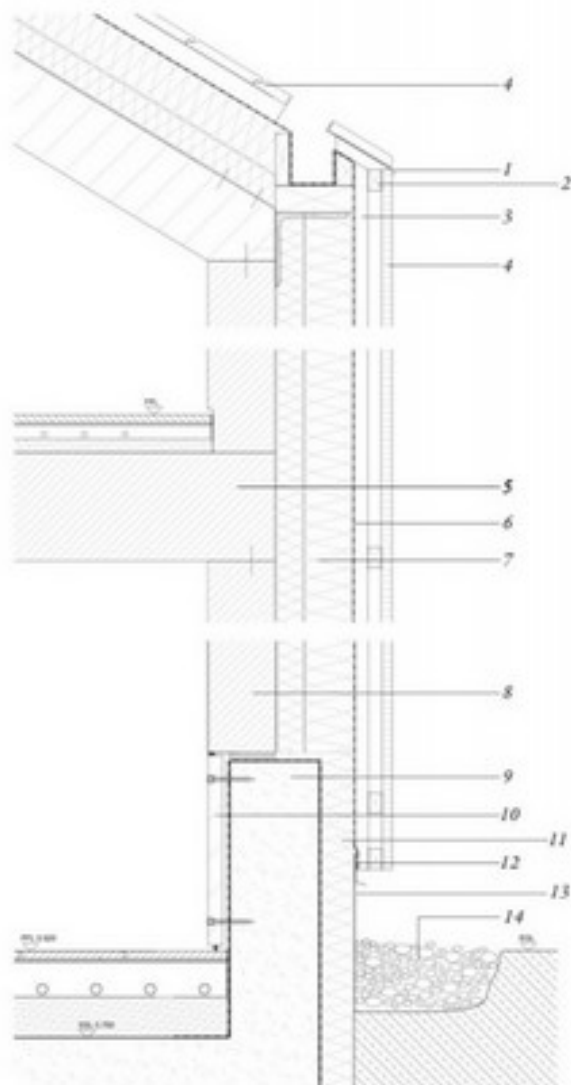




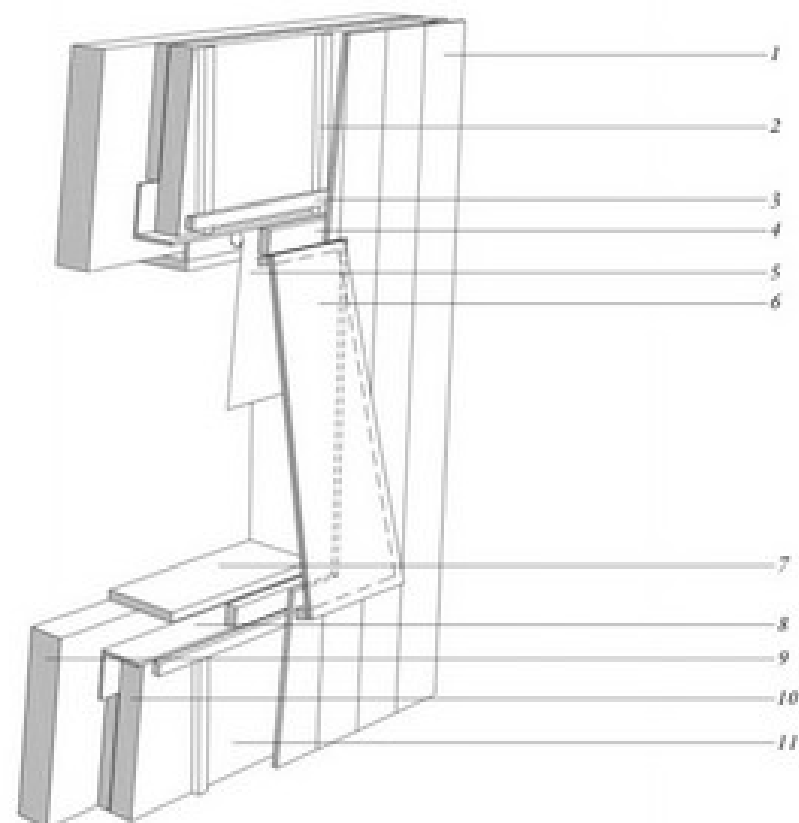








1 - Metal flashing to overhang 25mm over counter batten on wall; 2 - 32x25mm batten; 3 - 38x25mm counter batten / ventilation gap; 4 - Charred cedar fascia board; 5 - Laminated solid wood floor slab; 6 - Vapour permeable membrane; 7 - Wood fibre insulation with water resistant fibre board cover; 8 - Laminated solid wood wall; 9 - Reinforced concrete up-stand as flood defence; 10 - Secret fixed timber board skirting; 11 - Rigid insulation; 12 - 2mm galvanized steel flashing; 13 - Galvanized metal sheet over fixed; 14 - Flint stone.



1 - Charred larch cladding; 2 - 38x25mm counter batten; 3 - 38x25mm batten; 4 - Timber window frame; 5 - Recessed roller blind; 6 - Openable double glazing unit structurally bonded to frame; 7 - Soft wood lining; 8 - Galvanized metal frame to support glazing frame; 9 - Laminated solid wood; 10 - Wood fibre insulation with water resistant fibre board cover; 11 - Vapour permeable membrane.

Window detail



Continuing our recent obsession with outrageous swimming pool designs, is this one by **The Office for Metropolitan Architecture** — led by **Rem Koolhaas**, Ole Scheeren, Ellen van Loon, Reinier de Graaf, Shohei Shigematsu and Victor van der Chijs.

According to architect, **Michael van der Gaag**, who wrote about the project: ‘The client wanted a glass house with a swimming pool on the roof and two separate apartments — one for the parents, the other for the daughter’.

‘They also wanted a panoramic view — from their swimming pool — of the surrounding landscape and the city of Paris.



REM KOOLHAAS, OMA
VILLA DALL'AVA
PARIS, FRANCE 1991,
A private residence in St.Cloud, near Paris



[Web](#) [Images](#) [Video](#) ^{New!} [News](#) [Maps](#) [more »](#)

paris, france

Search Maps

Search the map

[Find businesses](#)

[Get directions](#)

Maps

[Print](#) [Email](#) [Link to this page](#)

Map

Satellite

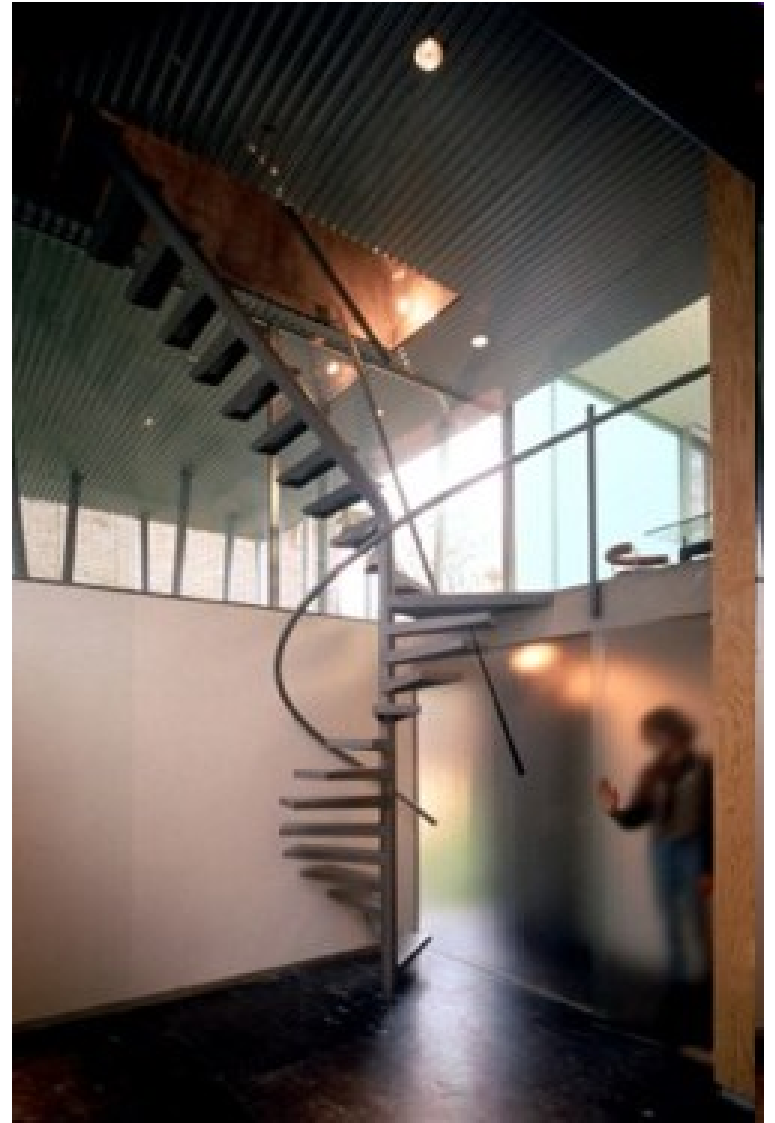
Hybrid

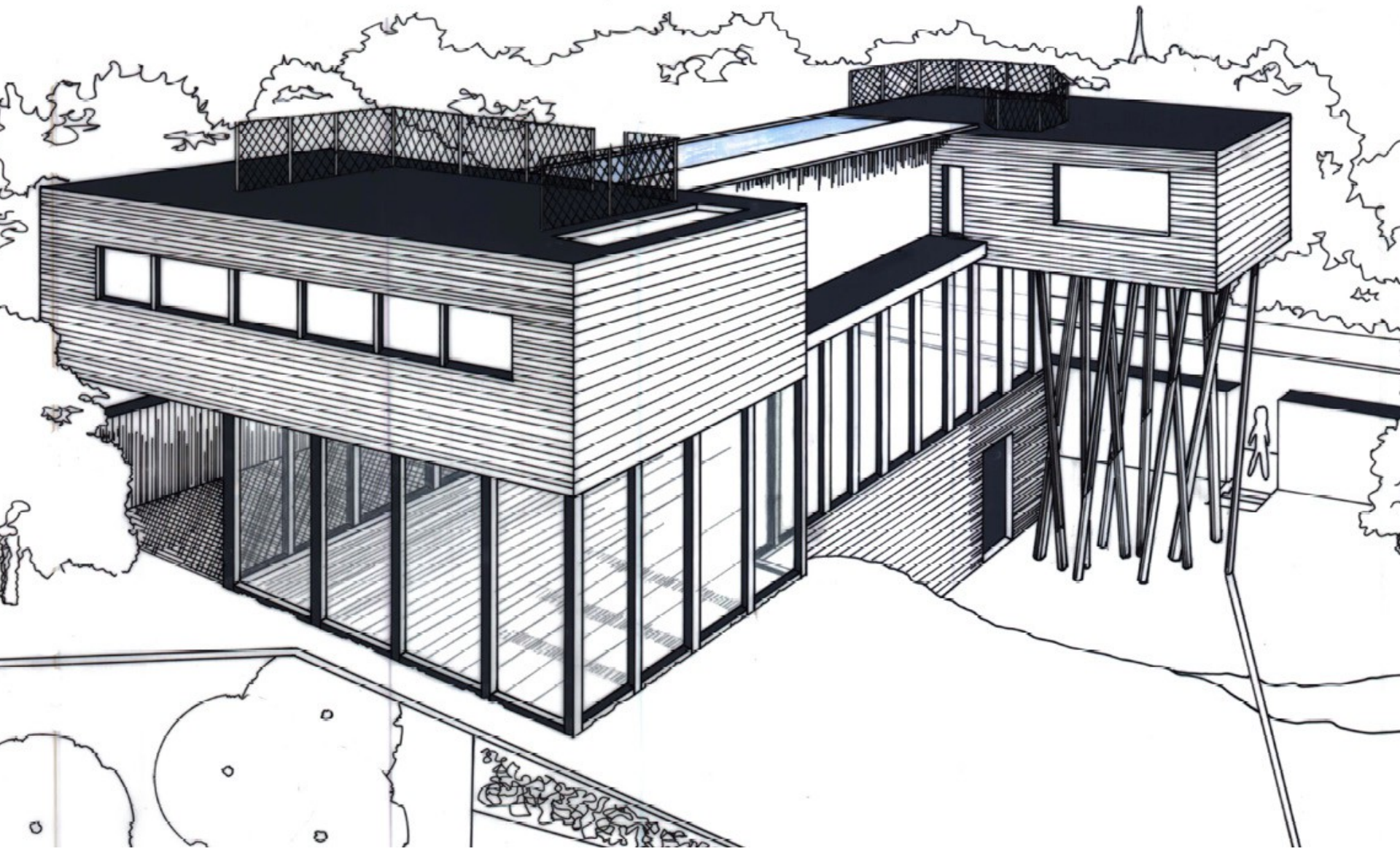


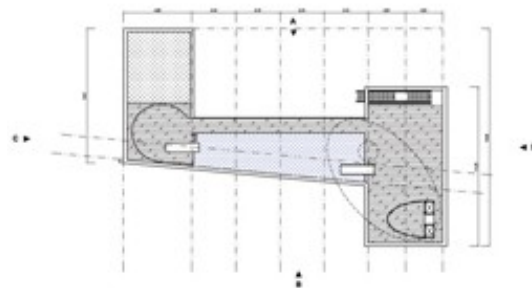
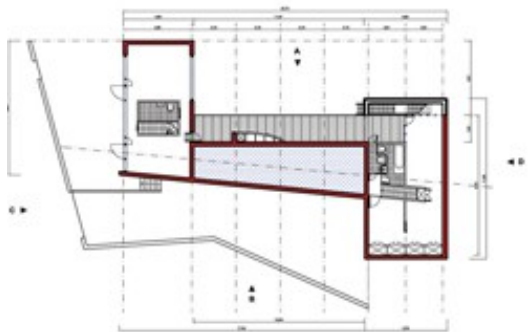
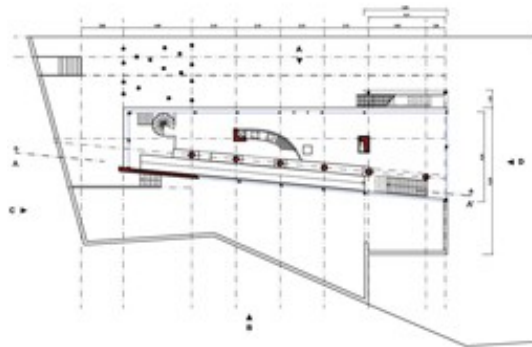
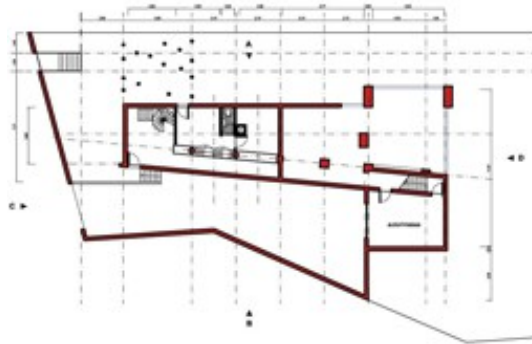
©2006 Google - Imagery ©2006 The GeoInformation Group | InterAtlas, Map data ©2006 TeleAtlas - [Terms of Use](#)







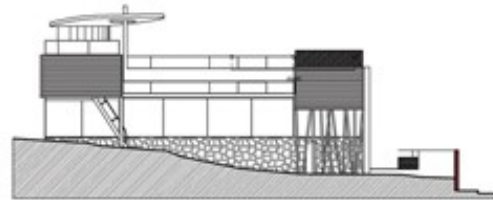




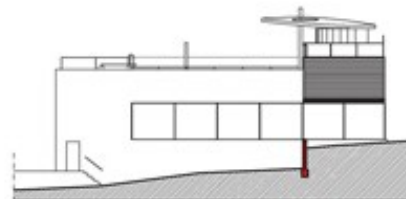
PROSPETTO D



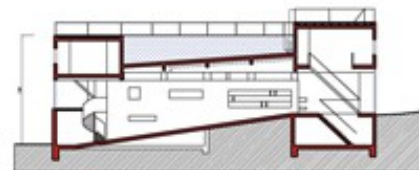
PROSPETTO C



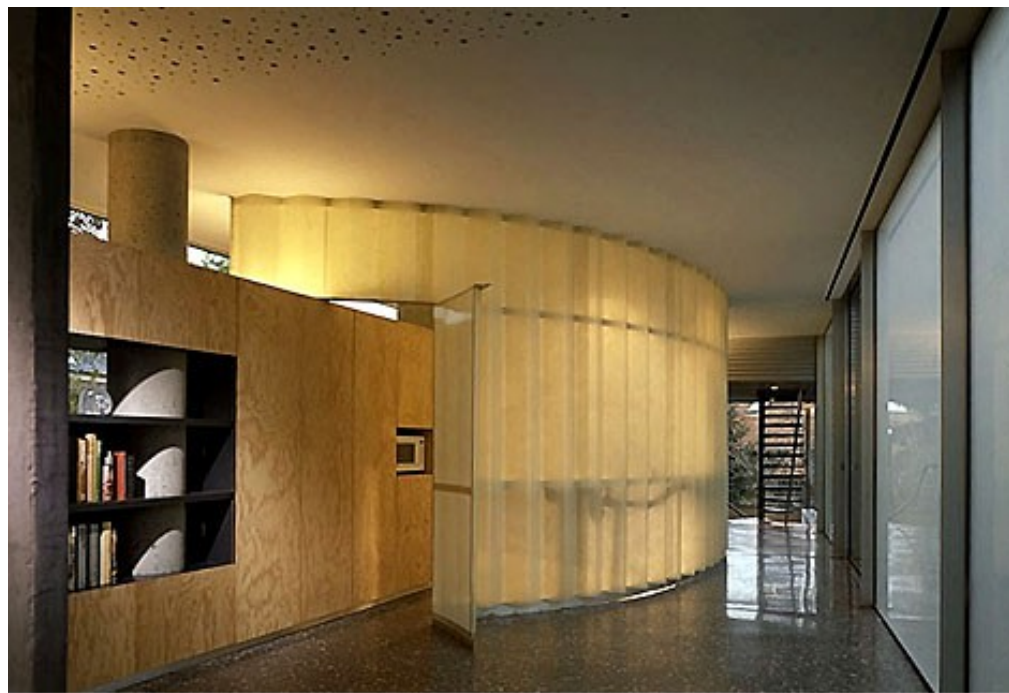
PROSPETTO A



PROSPETTO B



Sezione A-A (sezione sulla rampa bianca interna)





Maison de Verre

private residence on rue Saint-Guillaume,
Paris.

Pierre Chareau and Bernard Bijvoet,
1927-1931.







